

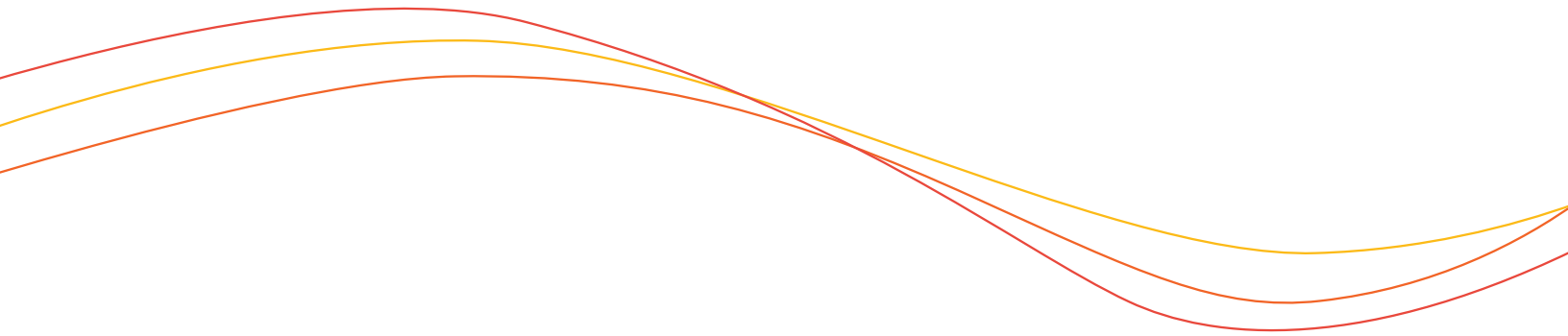
Student Information System



**Student's
Quick Start Guide**

Contents

Purpose of this Guide _____	3
Getting Started Technical Requirements _____	3
Logging In _____	4
My Dashboard Tools and Features _____	5
Communicating With Your Teachers _____	7



Purpose of this Guide

Welcome to Edgenuity's Quickstart Guide to the Student Information System (SIS). The SIS is referred to as the Edgenuity SIS and houses all of the online tools you will need to monitor, track, and update your progress in the virtual classroom.

Getting Started Technical Requirements

To ensure that you can login and begin working in your course, first verify that your computer meets the technical requirements of the program.

TECHNICAL REQUIREMENTS

Operating System

- Microsoft® Windows 7®
- Microsoft Windows Vista®
- Microsoft Windows XP® (Home /Pro)
- Mac OS® X 10.4.8+

Processor

- PC minimum 1.5 GHz or Power Mac® G4 1.5 GHz
- Intel® Core TM Duo 1.83 GHz

Memory

- ≥ 512 MB RAM

Hard Disk Space

- 100 MB

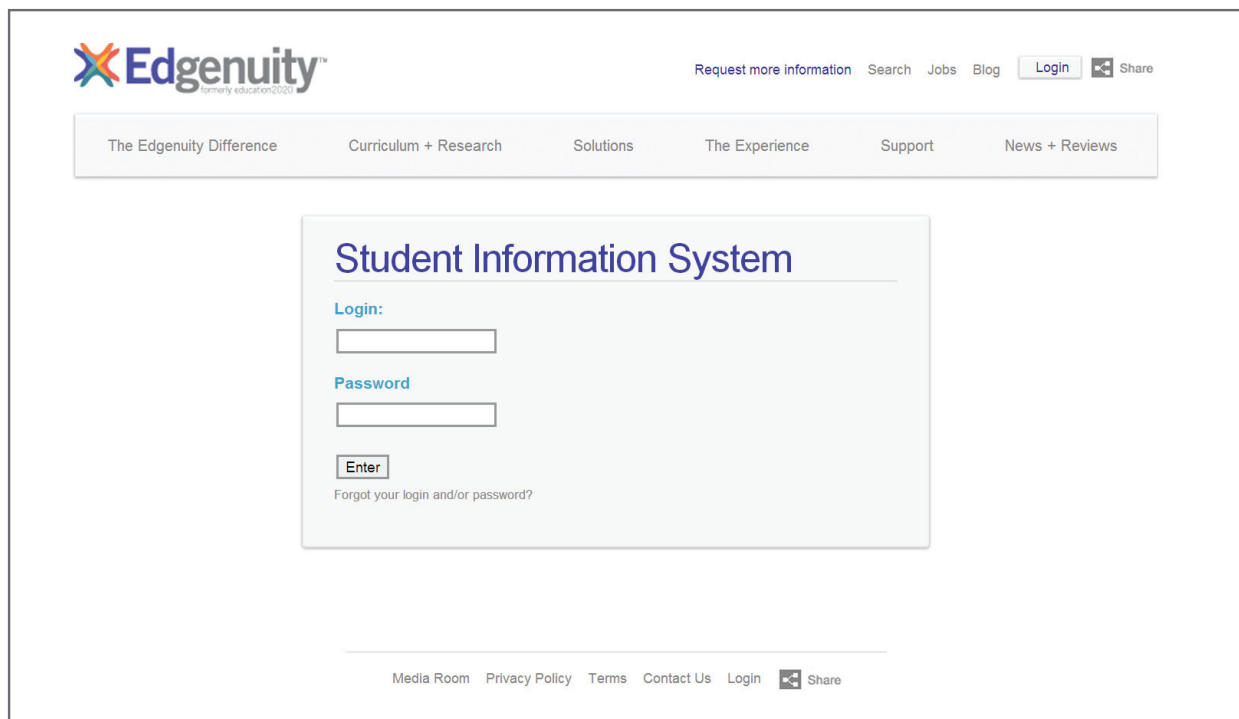
Plug-Ins

- Adobe® Flash® Player 9
- Adobe Acrobat®
- Adobe Reader® 7
- Adobe Shockwave® Player 10
- Apple® QuickTime® Player 7
- Java Version 1.6

Logging In

Begin by logging into the new system. Once you are on the login page, use your username and password to gain access to your online courses. Please visit the URL below:

Login Page: <http://www.edgenuity.com/SIS-Login>



The screenshot shows the Edgenuity website's login page. At the top left is the Edgenuity logo with the tagline "formerly education2020". To the right are links for "Request more information", "Search", "Jobs", "Blog", a "Login" button, and a "Share" icon. Below this is a horizontal menu with links: "The Edgenuity Difference", "Curriculum + Research", "Solutions", "The Experience", "Support", and "News + Reviews". The main content area is titled "Student Information System" and contains a login form with fields for "Login:" and "Password:", an "Enter" button, and a link for "Forgot your login and/or password?". The footer includes links for "Media Room", "Privacy Policy", "Terms", "Contact Us", "Login", and a "Share" icon.

My Dashboard Tools and Features

Your main page in the Edgenuity SIS is known as the Dashboard. The Dashboard provides access to your courses, your progress and grade reports, and your messaging center. Think of the Dashboard as the central hub that contains all of your student information while you are enrolled in the program. Let's review some of the key tools and features you will be using in the SIS.

The *Main Dashboard* features the following tools on the front page of the SIS as soon as you login:

- Academic Snapshot
- Upcoming Events
- Activity
- Messages
- Course Requirements
- Admission Status

The screenshot shows the Edgenuity SIS Dashboard for user Helen Test. The interface includes a sidebar with navigation links, a main content area with several widgets, and a footer with copyright information.

Navigation Sidebar:

- Dashboard
- Messages
- Mentor Information
- Course Information
- Academic Snapshot
- Suggested Pacing
- Student Activity
- Course Plan
- View Transcript
- School Calendar
- External Links

Main Content Area:

DASHBOARD

Here you can see an overview of the current student status and academic progress.

Academic Snapshot

This student is currently enrolled in 3 courses:

Course	Grade	Assignments	Pacing
MS Civics, Government, and Economics A.: SS2049A	0%	3 of 263	Behind
MS World Cultures and Geography A.: SS2041A	0%	0 of 308	Behind
Flash Game Development.: EL5759	0%	7 of 62	Behind

Upcoming Events

Aug 31, 2012 - Parent/Teacher Conferences

[See more events...](#)

Activity

These are the latest activities for this student:

Course	Time	Minutes
MS Civics Government and Economics - SS2049	8/12/2012 5:09:41 PM	0
MS Civics Government and Economics - SS2049	8/12/2012 5:07:31 PM	0
MS Civics Government and Economics - SS2049	8/12/2012 5:04:48 PM	0
MS Civics Government and Economics - SS2049	7/11/2012 9:18:04 AM	0
MS Civics Government and Economics - SS2049	7/11/2012 9:17:20 AM	0

Messages

You have 1 new message(s).

[See your messages...](#)

Course Requests

There are no courses requested by this student.

Admission Status

This student is currently **ACTIVE**.

The enrollment status is -1.

Genius SIS (c) - All rights reserved
[Genius SIS](#)

Academic Snapshot

This student is currently enrolled in 3 courses:

Course	Grade	Assignments	Pacing
MS Civics, Government, and Economics A - SS2049A	0%	3 of 263	Behind
MS World Cultures and Geography A - SS2041A	0%	0 of 308	Behind
Flash Game Development - EL5759	0%	7 of 62	Behind

The Academic Snapshot area lists the courses in which you are enrolled. Grade and progress information are included. Clicking on any one of the course names will log you into the Edgenuity Virtual Classroom, where you will complete your course assignments.

School Calendar

Here you can see relevant events for the coming days and months.

[Add new event](#)

August 2012

Upcoming Events

[Aug 31, 2012 - Parent/Teacher Conferences](#)

[See more events...](#)

The upcoming events area allows your teachers to set reminders of important events or deadlines for assignments. You may also use the calendar to set your own reminders.

Activity

These are the latest activities for this student:

Course	Time	Minutes
MS Civics Government and Economics - SS2049	8/12/2012 5:09:41 PM	0
MS Civics Government and Economics - SS2049	8/12/2012 5:07:31 PM	0
MS Civics Government and Economics - SS2049	8/12/2012 5:04:48 PM	0
MS Civics Government and Economics - SS2049	7/11/2012 9:18:04 AM	0
MS Civics Government and Economics - SS2049	7/11/2012 9:17:20 AM	0

When you work in your courses, the time you spend is logged. The Activity area shows the course names, the dates, and the number of minutes spent in each course while completing assignments.

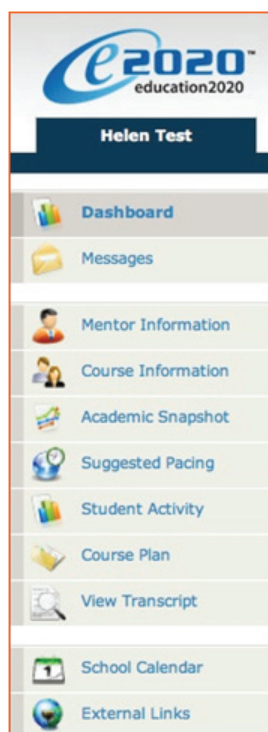
Messages

You have **1** new message(s).

[See your messages...](#)

Your Messages center is an inbox for important communications from your teachers. Be sure to check this inbox often.

The Sidebar contains the following tools:



Dashboard: Main page in the SIS; provides a quick snapshot of your progress and grades

Messages: View e-mail messages from your teachers and reply and create new messages

Mentor Information: View your assigned Mentor's information

Course Information: View your courses, course description, credit amount, and teacher contact information

Academic Snapshot: Provides an overall progress bar for all courses and specific progress bars for each class you are enrolled in

Suggested Pacing: A progress bar and weekly assignment goals to keep you on track with your targeted completion date

Student Activity: A tally of the total number of assignments you have completed each day in your courses

Course Plan: A plan that puts you on track for graduation

View Transcript: A record of your current grades and credit(s) earned in your classes

School Calendar: A calendar of current appointments or conferences

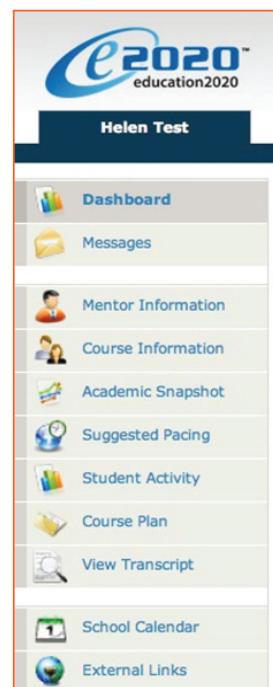
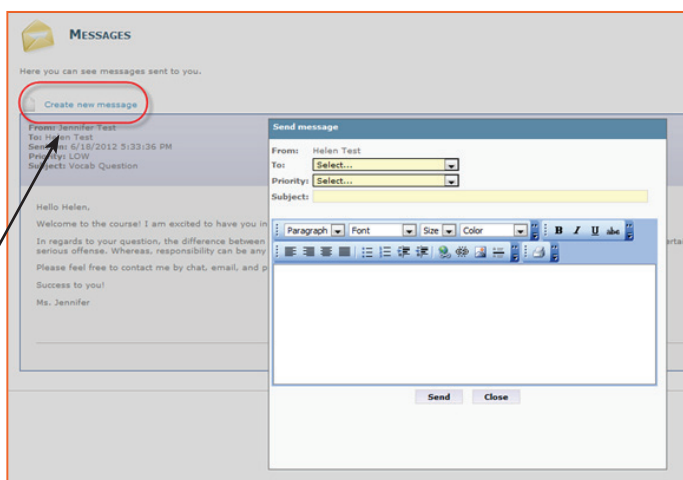
External Links: Links to popular and helpful resources when navigating your online classroom

Communicating With Your Teachers

Communicating with your teachers is one of the most important contributions to your success in the online classroom. Be sure to reach out to your instructors at any time if you need help. Within the Dashboard, you have the ability to email your instructors. To send a message, click on the Messages link from the left-hand menu:

Once inside the Message Page, you will see a log of your recent messages. You can reply to or delete your messages. You also have the ability to send email messages using a template.

Click on "Create New Message" to begin a message



We are excited to have you as part of the Edgenuity family. We hope you will find the Edgenuity Student Information System a valuable tool for monitoring and maintaining your progress in the online classroom. Do not hesitate to reach out to your instructor or coach/mentors should you need help navigating your courses.

